

# CABIN IN THE WOODS

A warm, rustic cabin interior. A large stone fireplace with a roaring fire is the centerpiece. The walls are made of horizontal log planks, and the ceiling features exposed wooden beams. A large, glowing lamp with a patterned shade hangs from the ceiling. Two leather armchairs with patterned cushions flank the fireplace. A low wooden coffee table sits on a cowhide rug in front of the fireplace. Two framed pictures hang on the walls: a landscape on the left and a scene with a horse and rider on the right. Two silver-colored metal stands with glass tops are positioned on either side of the rug.

Written and Photographed by RALPH KYLLOE



## *Domaille Residence at Yellowstone Club*



I had seen the home under construction for more than two years. The site was 11,000 feet above sea level, and I had been stuck in the driveway more than once battling several feet of snow typical at that elevation. Designed by architect Candace Miller of Livingston, Montana, the home offers 7,000 square feet of living space. Two master suites, a guest bedroom and bunkroom, kitchen, dining room, study, four full baths, three powder rooms, two interior fireplaces and one exterior fireplace offer the owners and their guests comfortable living after a day of skiing or golf. From the road (it's in a guarded, gated community), the building first appears unassuming. But the grandeur of the home is exposed as one ventures down the driveway. Artfully constructed by the talented craftsmen at Lohss Construction, the home is a fusion of recycled and restacked homestead cabins boasting exceptional stonework completed by Evje Masons. The interior design was completed by Debra Schull at Design Associates.







## CABIN IN THE WOODS



The front of the home offers a fusion of recycled timbers and creative stonework. Homes such as this are actually “stick built,” meaning the home is traditionally constructed with studs and beams. The electrical wiring, insulation and plumbing are then hidden in the walls. The recycled timbers are split down the middle and artfully applied to both the interior and exterior of the building. A home constructed in this fashion becomes energy efficient. The roof of the building is cedar shake shingles. The exposed rafters on the exterior of the building add visual motion to the form of the structure. Chinking, a flexible, glue-like material, is applied between the logs to further weatherproof the structure. Considerable landscaping, including the placement of huge boulders around the property, completes the setting.





*Domaille Residence at Yellowstone Club*



*Simple iron sconces placed tastefully around the exterior add subtle light on dark evenings.*

*Custom-made doors and stone staircases help the home blend with its environment.*



## CABIN IN THE WOODS



*The living room offers huge floor-to-ceiling windows from which one can enjoy the dramatic mountain views. The mantel for the fireplace was created from a recycled barn beam. The antique coffee table is English, and the armchair is covered with dark, textured leather. A soft green fabric covers the backs of two sofas, and the carpet is Caucasian.*



*Domaille Residence at Yellowstone Club*



Another view of the living area shows the high ceilings made with recycled rafters and a four-tier chandelier made from iron and elk antlers. An antique English sideboard acts as a sofa table and storage area behind the couch. A square, iron-legged table in rustic motif serves as a side table between the couches.



## CABIN IN THE WOODS

*A different angle of the living room demonstrates the open aspects of the home and shows an upstairs balcony lounge area, complete with armchairs and accessories.*





*Domaille Residence at Yellowstone Club*



*Creative use of available materials adds interest and uniqueness to the setting.*

*The rear of the home offers an extensive open-air patio area and a tall fireplace for roasting hot dogs and marshmallows.*



## CABIN IN THE WOODS



*A massive dining table surrounded by eight large dining chairs with leather seats and backs completes the dining room. A simple eight-light chandelier illuminates the dining area.*

*A detail photo of the dining room armchair and an afternoon wine setting, complete with a good Bordeaux and snacks, provides a glimpse of the "atmosphere" at the home.*





*Domaille Residence at Yellowstone Club*



The food preparation area offers a breakfast counter and four bar stools covered with rich blue fabric. The counter-top is covered with recycled barn boards. The kitchen island, complete with a wet sink, and related countertops are covered with granite slabs. The refrigerator and freezer are recessed behind wooden doors. Textured tiles cover the wall below the cupboards. The simple hanging light is diffused by a hide shade embellished with pinecone motif. The floor is made of recycled, rough-cut pine boards.



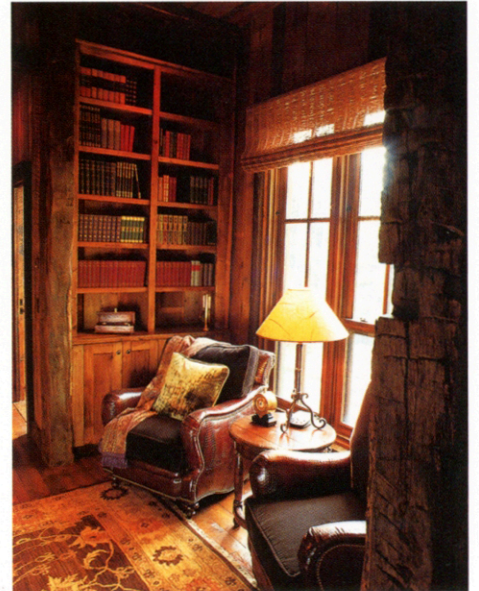
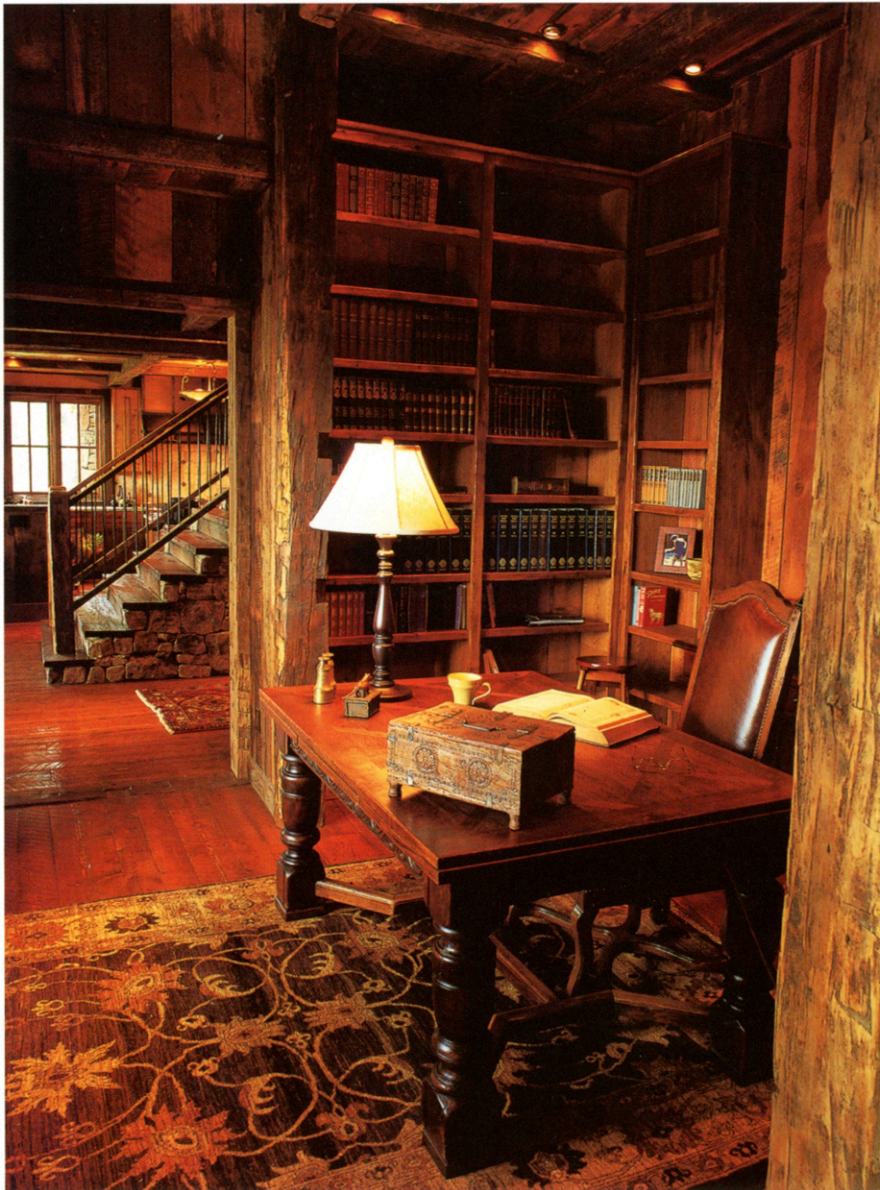


CABIN IN THE WOODS





*Domaille Residence at Yellowstone Club*



*Just off the living room is a passageway sitting area that offers floor-to-ceiling built-in bookcases, a desk and two highly textured leather armchairs. Tastefully arranged organic materials add form to the setting and complement the area.*



## CABIN IN THE WOODS

*This master bath has custom built-in cabinets, a high-drama hammered-copper bathtub, marble bowls as sinks and Japanese-style faucets for the tub and sinks!*





*Domaille Residence at Yellowstone Club*



*A vaulted ceiling plus deep windows make the master bedroom feel spacious. A twelve-light, two-tiered iron chandelier is an understated centerpiece. Two arm-chairs make this a comfortable sitting room as well.*





*This second-floor bedroom offers a king-size, bark-on rustic bed complete with floral bed coverings that complement the carpet. The walls have been painted a soft pastel color to accent the ancient ceiling beams. The room also offers a pair of upholstered armchairs and a custom tall cabinet that serves as an armoire. It is lit with a simple three-light iron chandelier and strategically placed lamps.*





*Domaille Residence at Yellowstone Club*



*The bunk room is complete with a pair of single-over-double bunk beds made of hickory wood. The beds are covered with warm, colored textiles that complement the vintage materials used to construct the home.*